



BATFE # 9-AZ-013-54-3L-00322 FPA, LTD
 BATFE EPLOC for Mike Steven Kreidel
 WWW.AZPYRO.COM
 928-660-3295

JULY 4, 2011 - FIREWORKS DISPLAY SCHEDULE

Time	Crew Members	Event
<u>9:00 AM</u>	Anyone	Meet at show site to setup and bury Mortars. City of Page provides back-hoe and shovels. Bring Gloves and Water with you. Setup Lasts approximately 1 ½ Hours.
<u>4:00 PM</u>	Mike, Ryan, Brian, John, Jeff	Meet at The Best Western Arizona Inn with trucks. Drive to the bunker to pickup fireworks. Drive to show site and unload. Unpack only Finale Boxes and Basins. Start Setup of Finale, All Basins, and Opening shells.
<u>7:00 PM</u> new time!	Entire Crew	You MUST BE ON TIME or risk losing your spot! Meet down on the Show Site (N. Navajo Dr. & Date St.). Quick Introduction and Briefing. Issue of Crew Passes. Unpack Firework Shells into their holding cans. ** Come Dressed for Display or change onsite (see below).
<u>7:45 PM</u>	Entire Crew	Clean Up Show Area (boxes, trash, organize). Finish "Back-Filling" around any and all Mortars. Check with Head Pyro Mike for additional tasks. Take a short break until 8pm.
<u>8:00 PM</u>	Entire Crew	All Crew On Show Site. Fully Dressed and ready to go. **(long pants, long sleeved shirt, shoes or boots and hat).
<u>8:05 PM</u>	Entire Crew	Gather for Briefing. Issue Hearing and Eye Protection. Handout and Review Safety Document. Fireworks Display Briefing by Head Pyro Mike. Assign Crew Positions (loaders, lid tenders, floaters). Practice Loading Shells.
<u>8:30 PM</u>	3 crew ??	Warning Shot #1 @ 8:30 -Shot #2 @ 8:40 -Shot #3 @ 8:50
<u>9:00 PM</u>	LAUNCH!	Start 2011 Fireworks Display.
<u>9:30 PM</u>	Entire Crew	Help clean up show site, load trucks, haul gear up the hill. Go to Dam Bar when finished.

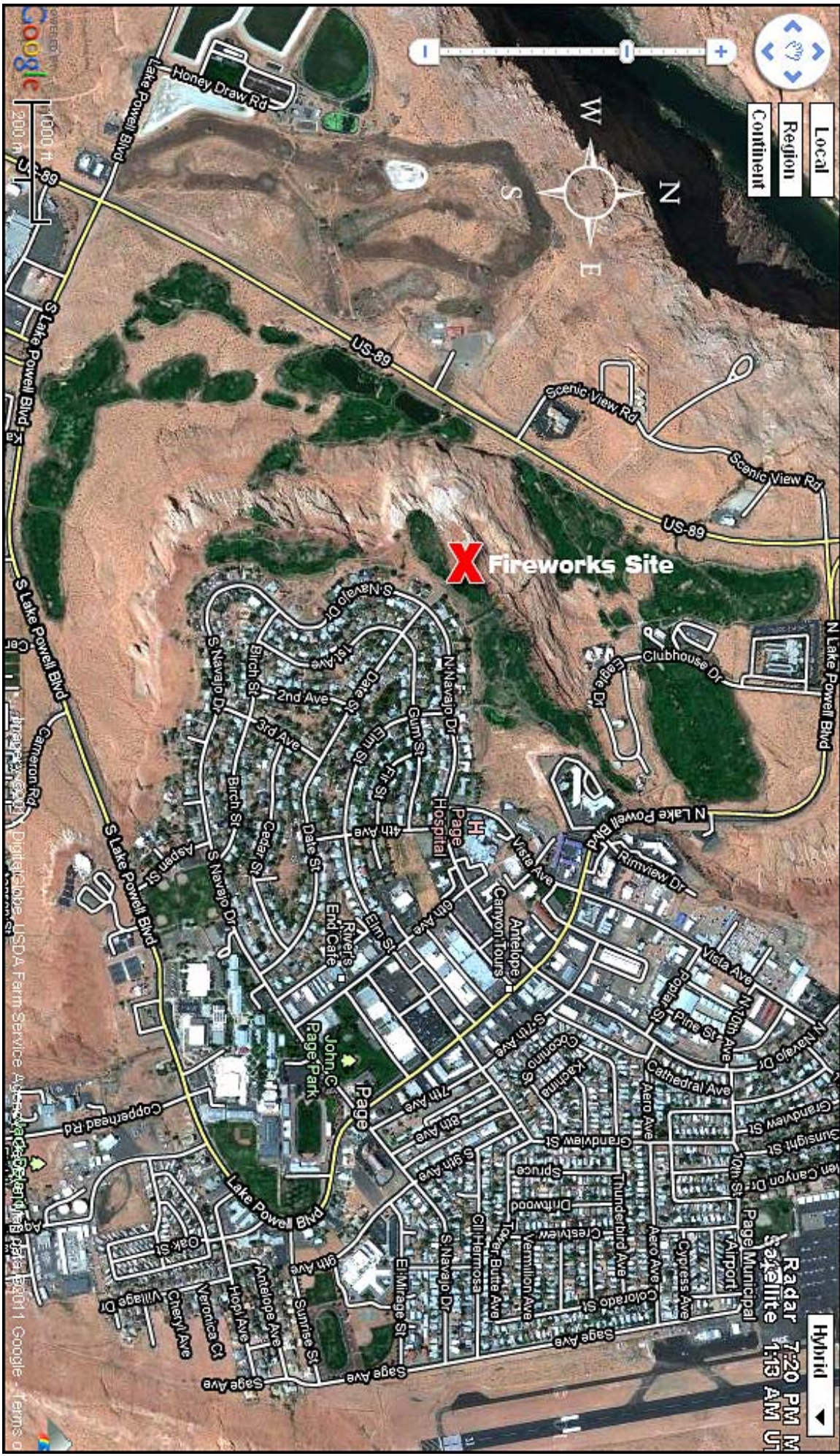
** PROPER CLOTHING: All Cotton, no synthetics. Long Pants, Long Sleeved Shirt, Boots or Closed Toe Shoes and a Hat. I provide hearing and eye protection for everyone.

NOTICE: Unlike years past, you now show up at 7:00 and stay the entire time.

IMPORTANT: There is to be **No Alcohol Consumed by Any Crew Member** prior to the show. I supply water for all crew members but feel free to bring anything non-alcoholic. First round of drinks is on me at The Dam Bar afterwards.

MAP BELOW: There is an empty lot at N. Navajo Dr. and Date St. Do Not Park in this lot, park along N. Navajo. Walk through the empty lot, down the hill across the golf course and towards the desert area below. Watch your step.

Questions: Call or email Mike. 928-660-3295 or mike@mikekreidel.com



Local
Region
Continent

X Fireworks Site

Hybrid
Radar 7:20 PM M
Satellite 1:13 AM U

Google
1000 ft
2014
Sage Ave
Antelope Ave
Honey Draw Rd
Lake Powell Blvd
US-89
Scenic View Rd
Clubhouse Dr
Edge Dr
N Lake Powell Blvd
Rimview Dr
Vista Ave
Canyon Tours
Antelope
S-7th Ave
Cathedral Ave
Aero Ave
Thunderbird Ave
Crestview
Vermillion Ave
Sage Ave
Sage Ave
El Mirage St
S Navajo Dr
Cill Hermosa
Tiger Butte Ave
Vermillion Ave
Crestview
Thunderbird Ave
Aero Ave
Cypress Ave
Page Municipal Airport
Copperhead Rd
John C. Page Park
River's End Cafe
Hospital
Page
Canyon Tours
Antelope
S-7th Ave
Cathedral Ave
Aero Ave
Thunderbird Ave
Crestview
Vermillion Ave
Sage Ave
Sage Ave
El Mirage St
S Navajo Dr
Cill Hermosa
Tiger Butte Ave
Vermillion Ave
Crestview
Thunderbird Ave
Aero Ave
Cypress Ave
Page Municipal Airport



BATFE # 9-AZ-013-54-3L-00322 FPA, LTD
BATFE EPLOC for Mike Steven Kreidel
WWW.AZPYRO.COM
928-660-3295

FIREWORKS DISPLAY SAFETY RULES

Safety Overview: A display site is the equivalent of controlled chaos. There are sparks and fire flying everywhere, it's loud, it's bright, and the pace is very fast. It is important that everyone pay attention to their surroundings at all times.

1. Always be aware of everything going on around the shoot site.
2. Move in a quick but safe manner. Do not run.
3. Listen to each other. Watch each other. Pay attention to the Shooter.
4. If you have a problem let the Head Pyro or someone know about it.
5. You are not allowed in the shooting area without proper clothing -
*(long pants, long sleeved shirt, shoes or boots, hat, hearing/eye protection)
6. No Smoking within 50 feet of the display site.

Loaders and Lid Tenders: Your #1 rule is to always protect the shells in the holding cans. This means you remove the lid, grab the shells, then close it tight. Wind and low breaks can cause sparks to fly everywhere. You must protect the can from sparks.

1. Protect The Shells in The Cans.
2. Protect The Shells while Carrying Them.
3. Keep The Lid On your Storage Can when not grabbing shells. Always!
4. Remove the lid with your back to the firing line, protecting the shells inside.
5. Remove the lid quickly, grab your shells, then replace the lid quickly.
6. Remove only the number of shells as mortars you are assigned.
7. Hold the shells close to your body as you carry them to the mortars.
8. Reload your mortars when the shooter is 5 mortars past you.
9. The Lid Tender must watch and make sure all the shells fire per round.
10. If you hear the word "Low", Stop what you're doing and cover, protect.

Misfire Instructions:

1. Do Not Load another shell into the mortar that failed to fire.
2. Mark The Mortar so you remember which mortar not to reload.
3. Notify the Shooter about that mortar.

Show Tempo: It is very important to keep the show moving. Breaks in the show will ruin a fireworks display and can be avoided if you hustle and make sure your mortars are always loaded. There are 2 shooters. When one finishes his run down the line, the other starts at the beginning. This turnaround happens every 1 minute.

Do Not make the shooter wait for you to load your mortars!

This display is designed so a shell is fired every 2 seconds and the show moves along very quickly, so there is no time to rest. You need to move quickly and safely, while at the same time being aware of everything going on around you.

Be Safe and have Fun !!